



CONSINEE

LEADERS IN LUXURY

COTTON  
CASHMERE

Brighton • Sandbanks • Hove  
Brighton Marl Galaxy

- 7 -

SPRING SUMMER 2026

**BRIGHTON / BRIGHTON ECO**

Nm 2/48 85% Cotton 15% Cashmere Semi-worsted / 14/16gg 1end

**SANDBANKS / SANDBANKS ECO**

Nm 2/48 70% Cotton 30% Cashmere Semi-worsted / 14/16gg 1end

**HOVE / HOVE ECO**

Nm 2/28 85% Cotton 15% Cashmere Semi-worsted / 12gg 1end



*Leaders in Luxury*

# BRIGHTON, HOVE & SANDBANKS

BRIGHTON 2/48 85% Cotton 15% Cashmere Semi-Worsted ◆ HOVE 2/28 85% Cotton 15% Cashmere Semi-Worsted

♣ SANDBANKS 2/48 70% Cotton 30% Cashmere Semi-Worsted. We offer organic cotton options for Brighton Eco, Hove Eco & Sandbanks Eco.



CHALK ◊  
SW211, ♣ SS1701



ALABASTER  
SW289



GRANITA  
SW262



IVORY  
SW220, ◆ SS1201

CHANTERELLE  
SW290

SUNFLOWER  
SW293



PORRIDGE  
SW288

HAYSTACK  
SW291

TOPAZ  
SW294



POWDER  
SW208, ◆ SS1221

HENNA  
SW292

OLIVE  
SW295



MINK  
SW266, ◆ SS1218

SHIRAZ  
SW204

DUFFEL BAG  
SW296



BRIGHTON: All colours stock supported. ◆ HOVE, ♣ SANDBANKS available in colours marked by relevant symbol.  
◊ Indicates contains fluorescent dyestuff

# BRIGHTON, HOVE & SANDBANKS

BRIGHTON 2/48 85% Cotton 15% Cashmere Semi-Worsted ◆ HOVE 2/28 85% Cotton 15% Cashmere Semi-Worsted

♣ SANDBANKS 2/48 70% Cotton 30% Cashmere Semi-Worsted. We offer organic cotton options for Brighton Eco, Hove Eco & Sandbanks Eco.



LEMON  
SW297



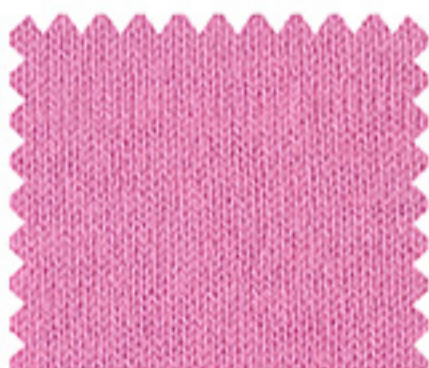
BLUSH  
SW242



ENCHANTED  
SW271, ♣SS1705



SUN  
SW298



SHERBET  
SW213



FLEUR  
SW283



NUTMEG  
SW273



TOMATO  
SW222, ◆SS1208



ROSEBUD  
SW2003



BRICK  
SW2001



ROUGE  
SW284



EMPEROR  
SW2004



SPICE  
SW299



HAWTHORN  
SW2002



MAGIC  
SW2005



BRIGHTON: All colours stock supported. ◆HOVE, ♣SANDBANKS available in colours marked by relevant symbol.

○ Indicates contains fluorescent dyestuff

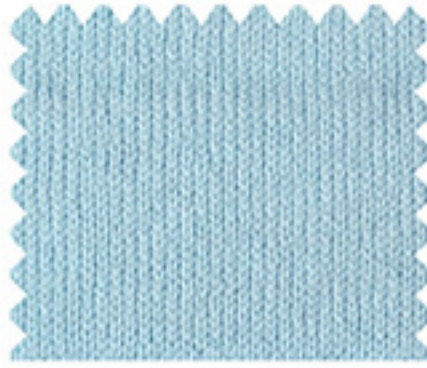
# BRIGHTON, HOVE & SANDBANKS

BRIGHTON 2/48 85% Cotton 15% Cashmere Semi-Worsted ◆ HOVE 2/28 85% Cotton 15% Cashmere Semi-Worsted

✦ SANDBANKS 2/48 70% Cotton 30% Cashmere Semi-Worsted. We offer organic cotton options for Brighton Eco, Hove Eco & Sandbanks Eco.



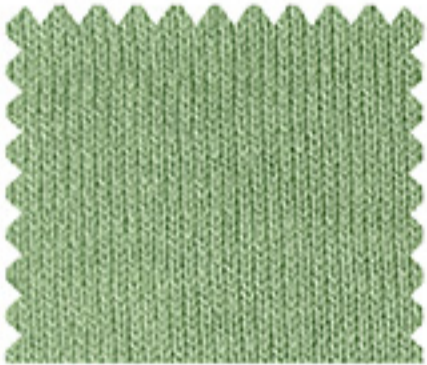
MERMAID  
SW285



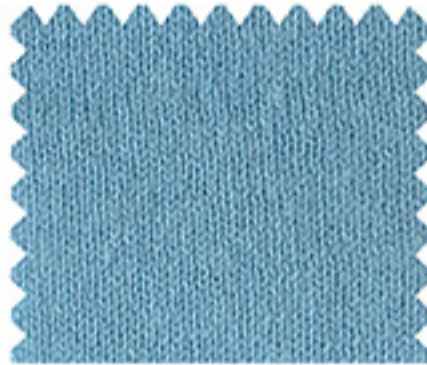
AQUA  
SW231



FOGGY  
SW217, ◆ SS1206, ✦ SS1702



PERIDOT  
SW2006



SAIL  
SW286



THUNDER  
SW218, ◆ SS1207



TURF  
SW281



MAYFAIR  
SW247, ◆ SS1214



FLANNEL  
SW2007



JADITE  
SW275, ◆ SS1222



CAPTAIN  
SW287



CHARCOAL  
SW219, ◆ SSS1212



CYPRESS  
SW248, ◆ SS1220



NAVY  
SW207, ◆ SS1202, ✦ SS1703



BLACK  
SW215, ◆ SS1210



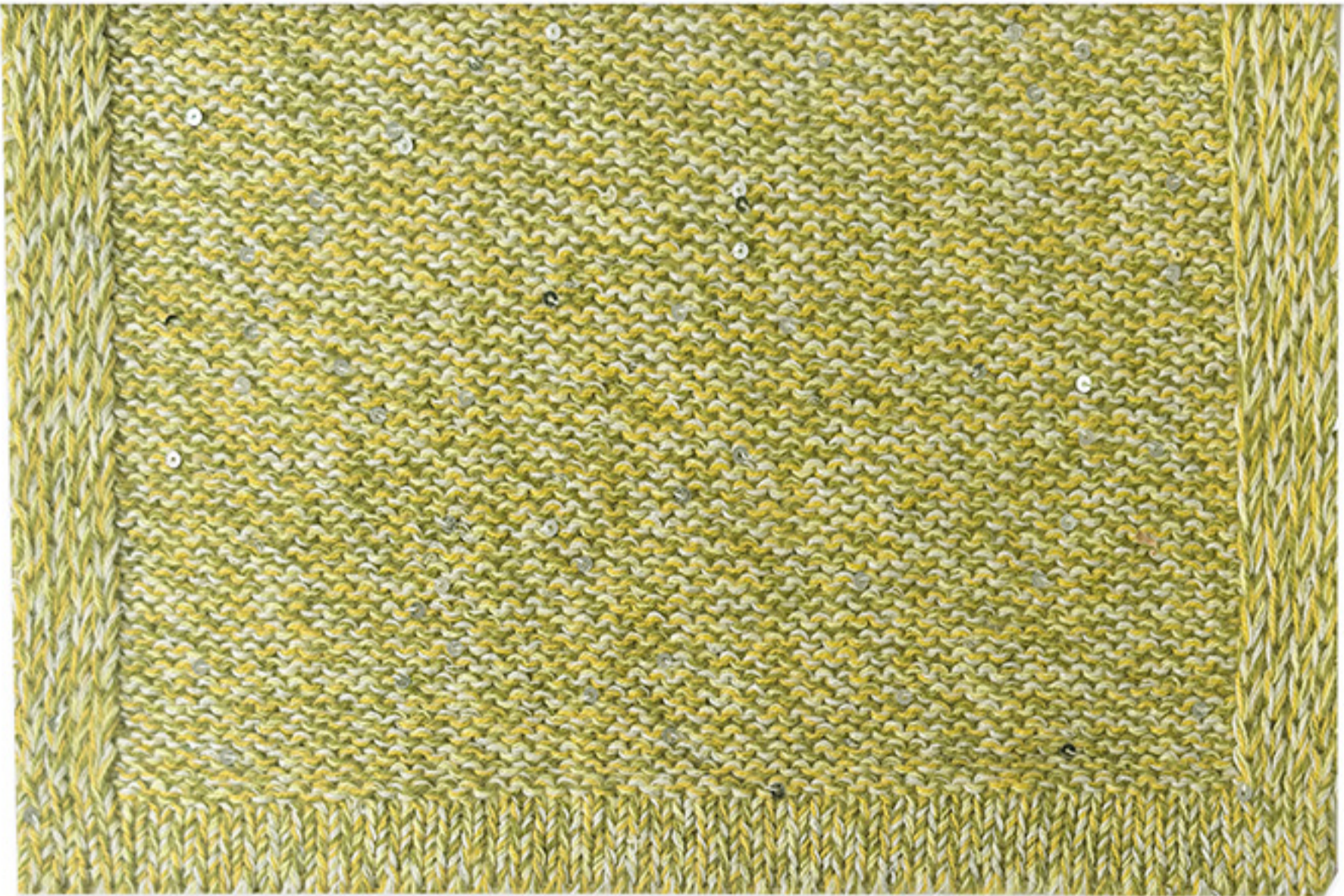
BRIGHTON: All colours stock supported. ◆ HOVE, ✦ SANDBANKS available in colours marked by relevant symbol.

○ Indicates contains fluorescent dyestuff

# BRIGHTON MARL GALAXY

Nm 1/5.5 88%Cotton 10%Cashmere 2%Polyester / 5gg 1end

NEPTUNE SS3118ML



可从BRIGHTON中选取任意颜色, 搭配金银丝, 组成新的BRIGHTON MARL GALAXY  
To create BRIGHTON MARL GALAXY select colours from BRIGHTON stock service and a sequin shade of your choice for a personalised desired effect



MALDIVES ◯  
SS3115ML



VENUS  
SS3116ML



VIOLET  
SS3117ML



GLAZE  
SS3121ML



SATURN  
SS3119ML



MERCURY  
SS3120ML

SPRING / SUMMER 2026

# COTTON CASHMERE



Please scan QR code in Consinee App for more information about Cotton Cashmere  
打开APP扫描二维码，了解更多关于 Cotton Cashmere

**BRIGHTON • BRIGHTON ECO • SANDBANKS • SANDBANKS ECO  
HOVE • HOVE ECO • BRIGHTON MARL GALAXY**

## STOCK SUPPORTED & FINE YARN COLLECTION

At Consinee we use only the very best premium natural fibres in our all our yarns, with cashmere the core of our collection. The luxury, beauty and exceptional warmth of cashmere is unrivalled and immediately recognizable due to its unique qualities of lustre, lightness, durability and softness creating a superior elegance for knitwear.

We value tradition and heritage very highly, working closely in partnership with experienced goat herders, whilst also embracing innovation using modern dyeing and manufacturing processes to create exceptional colours, effects and weights with all our yarns.

### BRIGHTON

Nm 2/48 85% Cotton  
15% Cashmere Semi-worsted  
Gauge Scale: 14/16gg 1end  
Our fine classic cotton cashmere yarn with a superior handle offering a great alternative to our 100% Cashmere for spring and transeasonal knitwear.

### HOVE

Nm 2/28 85% Cotton  
15% Cashmere Semi-worsted  
Gauge Scale: 12gg 1end  
Our 12gg option for a classic cotton cashmere yarn with a superior handle offering a great alternative to our 100% Cashmere for spring and transeasonal knitwear.

### SANDBANKS

Nm 2/48 70% Cotton  
30% Cashmere Semi-worsted  
Gauge Scale: 14/16gg 1end  
A fine luxurious cotton cashmere yarn with extra cashmere for a warmer and softer cashmere rich handle option in our cotton cashmere range.



We offer organic cotton options for BRIGHTON ECO, HOVE ECO, SANDBANKS ECO. Please contact our sales team for more information.

### 库存现货服务

康赛妮系列产品以羊绒纱线为主，选用最优质的天然纤维原料。羊绒的奢华、美丽和非凡的保暖是无与伦比的，其独特的光泽、轻盈、耐穿和柔软品质，为针织服装创造了卓越的优雅。

同时，我们非常重视经典和传承，与牧场及经验丰富的牧民紧密合作，积极创新，通过使用现代染色和制造工艺，为我们的纱线创造出独特的颜色、效果及质感。

### BRIGHTON

Nm 2/48 85% Cotton 15% Cashmere 半精纺  
适用针型: 14/16gg 1end  
Brighton这款纱线是经典的细支棉、羊绒混纺纱线，手感卓越，是100%羊绒针织纱线春季和过渡季节的最佳替代产品。

### Minimum order quantities

Brighton, Hove and Sandbanks:  
Stock supported shades 1kg per colour.  
Customer's own colour minimum order 30kgs per colour top dye.

### BRIGHTON MARL GALAXY

Nm 1/5.5 88% Cotton 10% Cashmere  
2% Polyester  
Gauge Scale: 5gg 1end  
Brighton Marl Galaxy is a yarn with textural depth of colour and novelty effect twisting multi-ends of colourful brighten cotton cashmere with an end of sequins to give an unexpected shimmer to a casual chunkier luxury yarn.

### Brighton Marl Galaxy minimum order quantities:

Stock supported shades 1kg per colour  
Brighton supported shades 30kgs per colour.  
Customer's own colour minimum order 100kgs per colour.

### HOVE

Nm 2/28 85% Cotton 15% Cashmere 半精纺  
适用针型: 12gg 1end  
Hove这款纱线是适合12gg织造的经典棉、羊绒混纺纱线，具有超柔手感，是100%羊绒针织纱线春季和过渡季节的最佳替代产品。

### SANDBANKS

Nm 2/48 70% Cotton 30% Cashmere 半精纺  
适用针型: 14/16gg 1end  
Sandbanks这款纱线是一款精致奢华的棉、羊绒混纺纱线，具有羊绒纤维的超柔手感和绝佳保暖性能，是棉羊绒混纺纱线系列里手感最佳的纱线。

### 最小起订量:

Brighton, Hove, Sandbanks: 库存颜色1公斤/色  
客户自己的颜色散毛染色30公斤/色。

Our customer commitment means we like to listen and react to your individual needs, if you are looking for your own unique blends, counts or colours or simply want more information please do not hesitate to contact us at [info@consinee.com.cn](mailto:info@consinee.com.cn) and we will be more than happy to help.

康赛妮向您承诺：我们乐于了解并满足您的个性化需求，如果您正在寻找属于您独特的成分、支数或颜色，并想了解更多相关信息，请通过 [info@consinee.com.cn](mailto:info@consinee.com.cn) 联系我们，我们将非常乐意提供帮助。

### General Enquiries (一般咨询)

T: +86-574-87522088  
M.T.: +86-13605888890

### Export Sales (出口销售热线)

T: +86-574-87522128  
M.T.: +86-13867865216

### Domestic Sales (国内销售热线)

T: +86-574-87522115  
M.T.: +86-15857405038

### Consinee Group

No.65 Haichuan Road,  
Ningbo, Zhejiang  
P.R.China

### 康赛妮集团

宁波市江北区海川路65号

### BRIGHTON MARL GALAXY

Nm 1/5.5 88% Cotton 10% Cashmere  
2% Polyester 适用针型: 5gg 1end  
Brighton Marl Galaxy是一款具有强烈肌理感和色彩艺术性的纱线，用多彩的棉、羊绒纤维搭配闪耀珠片，带来粗花呢的外观，给休闲的豪华纱线带来意想不到的闪耀光泽。

### Brighton Marl Galaxy最小起订量:

库存颜色1公斤/色  
如选Brighton色卡上的颜色30公斤/色  
客人自己的颜色100公斤/色。



我们提供 BRIGHTON ECO, HOVE ECO, SANDBANKS ECO 为有机棉选择——想了解更多相关信息，请联系我们销售团队

INVESTING IN

# GREEN TECHNOLOGY

Consinee Group was founded in 1999 with the aim of being a world leader through refining the production of premium yarns and intelligent innovation, placing cashmere at the heart of the collection. Today Consinee has earned the reputation for being one of the largest and most prestigious spinners in the world underlining our mission to be leaders in luxury.

**With a continually expanding collection of premium natural fibre yarns we offer a versatile and flexible fully stock supported range ready for immediate delivery.**

Our continual investment in green technologies and industry expertise for processing, dyeing and spinning, along with our creative colour and yarn innovations, has made Consinee an advanced market leader and the largest global cashmere yarn supplier.

Part of our commitment to sustainability has been through innovating the yarn industry by advanced ecological technology to streamline production. Our pioneering vision has created the worlds first fully automated unmanned smart cashmere spinning factory. This facility is the first of it's kind for luxury yarns and is now fully operational, integrating the latest and most advanced intelligent elements in the manufacturing industry.

The whole factory, from the processing of cashmere raw material to the output of finished yarn is a fully automatic operation that has created a system that optimises efficiency, reduces energy consumption and waste, and offers complete digital traceability

and transparency of the entire production process. The Consinee smart factory has disrupted the industry by rethinking traditional production processes and leading the world with a fresh approach to ecologically minded luxury yarn production.

We are very proud at Consinee Group to have the largest and most intelligent cashmere yarn production facility in the world today underlining our core values to align intelligent production with green initiatives for sustainable production that work in harmony, making the Consinee name synonymous with luxury innovation, excellence and supreme sustainable quality.

Our partnership with suppliers and dedication to new manufacturing techniques has earned us a wide range of certifications to reassure you of our unrivalled quality control and belief in sustainable initiatives. To find out more contact us at [info@consinee.com.cn](mailto:info@consinee.com.cn) or download our App.



康赛妮秉承以人为本、以誉为商、与供应商有着良好的合作关系，并执着于强化生产技术，使我们获得了业内众多客人的认可，也获得了许多认证，确保了我们的无与伦比的质量控制和可持续发展的信念。想了解更多有关认证的信息，请下载APP或通过以下邮箱与我们联系：[info@consinee.com.cn](mailto:info@consinee.com.cn)

康赛妮集团成立于1999年，以羊绒为核心，旨在重新定义未来针织时尚和家居的奢华纱线意义。康赛妮采取超前思维方式与现代奢华理念，已经成为全球市场的领导者。

随着公司规模不断扩大，我们提供了一个多功能和灵活的库存支持。

我们对绿色技术的应用，对加工、染色和纺纱的专业知识的了解，纺出丰富色彩和创新性纱线，使康赛妮集团成为先进的市场领导者和全球最大的羊绒纱线供应商。

我们通过在纱线行业实行先进的生态技术创新来实现可持续发展。康赛妮集团本着把传统行业做精、做专、做出新意，在集团董事长、总裁薛惊理的引领下，以为行业创新、做行业引领、给行业信心为己任，依托中国制造 2026和工业 4.0 战略发展背景，联合德国西门子公司打造的全球首家智能化、信息化、数字化、无人黑灯毛纺织产业链工厂，引领中国毛纺行业发展。

康赛妮未来工厂 顺利建成投产，颠覆了传统纺纱企业自动化和信息化技术落后的面貌，将传统的区域化作业、间歇式的生产方式，转化为精益细胞化、流程型的生产方式，生产效率翻倍提升，交货周期大大缩短，开启业界三周交货新局面。成为中国纺织行业第一家全智能化无人工厂，也是当今世界规模最大、智能化程度最高的羊绒纱线生产工厂，是国家制造业单项冠军示范企业。

我们为康赛妮集团拥有当今世界上最先进的智能纺纱生产设施而感到自豪，始终强调将智能织造与绿色可持续生产相结合的价值观，也进一步使康赛妮集团成为奢华创新、卓越和最高可持续质量的代名词。

CONSINEE HAS ALWAYS PLACED GREAT IMPORTANCE AND EMPHASIS ON BEING ETHICAL AND SOCIALLY RESPONSIBLE, WITH A TRUE COMMITMENT TO ENVIRONMENTAL PROTECTION, ANIMAL WELFARE AND SUSTAINABILITY. WE BELIEVE IN TOTAL TRANSPARENCY FROM THE PROVENANCE OF RAW FIBRE TO THE COMPLETE PRODUCTION PROCESS AND OFFERING FULL TRACEABILITY BACK TO THE FARMS FOR ALL OUR NATURAL FIBRES.



康赛妮一贯高度重视和强调道德和社会责任，对环境保护、动物福利和可持续发展作出郑重的承诺，我们从原料来源到整个生产过程完全透明，所有原料完全可以追溯到牧场，所有过程都严格遵守生态准则。



康赛妮集团  
CONSINEE GROUP

HEADOFFICE

65 Haichuan Road, Ningbo,  
Zhejiang, P.R.China

Telephone: +86 574 8756 0188

Fax: +86 574 8756 0168

Email: [info@consinee.com.cn](mailto:info@consinee.com.cn)



中文



English



App

[www.consinee.com.cn](http://www.consinee.com.cn)

[www.consineecashmere.com](http://www.consineecashmere.com)